



FOR NEW EQUIPMENT SALES, CALL
800.958.2555
TO SPEAK WITH AN ALTEC REPRESENTATIVE
or visit us online at altec.com

 **Altec**
DUAL-RATED SOLUTION

AC65E-155S

STANDARD FEATURES

- 6-Section 155 ft Main Boom with Two Extension Modes for Maximized Lifting Capacity Across the Working Range
- 4-Position Swing-Out-and-Down Outriggers with Independent Control of Swing, Extend, and Down Jack Functions
- Altec LMAP (Load Moment & Area Protection) System with Smart-Zone Rating to Allow for Asymmetric Outrigger Setups
 - » Rated Capacity Limiter
 - » Displays: Boom Length, Boom Angle, Load on Hook, Percent of Rated Capacity
 - » Operator Defined Audible Alarm Set-Points for Boom Angle, Length and Rotational Position
- E-Series Electric Over Hydraulic Control System
- Dual Entry 20° Tilt Cab with Heater and A/C
- Outrigger Boom Interlock System
- Winch Drum Rotation Indicator
- Anti-Two Block Device
- Winch Control and Boom Telescope Control at Load Hook Stow Point
- 15,000 lb 2-Speed High-Performance Piston Winch
- Rotation Resistant Wire Rope
- Altec Insights, Lifetime Access

OPTIONS

- 12,500 lb Hydraulically Removable Counterweight
- 15,000 lb 2-Speed Auxillary Winch
- 2-Stage 50 ft Hydraulic Articulating Jib (0° to -80°), 32 ft Retracted
- 2-Stage 50 ft Manual Offset Jib (0°, 15°, 30°, 45°), 32 ft Retracted
- ANSI A92.2 Compliant Aerial Operation Package
 - » Quick Attach 2-Man Aluminum Platform, 1,200 lb (544.3 kg) Capacity
 - » Radio Remote Controls
 - » Fall Protection
 - » Lanyard Interlock System with Audible Alarm and Function Kickout
- Platform Hydraulic Tools & Intensifier Package
- Federal Bridge Compliant Unit Configuration
- Altec Insights, 12-months Access

Recommended safety equipment, available through Altec Supply, include wheel chocks and outrigger pads.

GENERAL SPECIFICATIONS

Boom Length (6-Section)	155 ft (47.2 m)
Stowed Travel Height	13.2 ft (4.01 m)
Vehicle Travel Length	39 ft (11.88 m)
4 Position Swing-Out-and-Down Outriggers	
Main/Aux Outrigger Full Span	24.8 ft / 24 ft (7.55 m / 7.3 m)
Counterweight Tail swing	10.75 ft (3.27 m)
Control System	Electric Over Hydraulic

CRANE SPECIFICATIONS

Maximum Lift Capacity	130,000 lb (58,967.0 kg)
Powered Sheave Height	165 ft (50.2 m)
Maximum Sheave Height with Telescopic Jib	215 ft (65.5 m)
Two Speed Winch Capacity	15,000 lb (6,803 kg)
ASME B30.5 Compliant	

AERIAL SPECIFICATIONS

Platform Capacity	1,200 lb (544.3 kg)
Platform Working Height	167 ft (51 m)
with Retracted Telescopic Jib	197 ft (60 m)
with Extended Telescopic Jib	216 ft (65.8 m)
ANSI A92.2 Compliant	

UNIT		RECOMMENDED CHASSIS DIM				MINIMUM RECOMMENDED CHASSIS SPECIFICATIONS				
Model	Rear Axle	CA (in)	WB (in)	AF (in)	AS (in)	Front Axle Rating (lb)	Rear Axle Rating (lb)	GVWR (lb)	Frame Sec Modulus (in ^ 3)	Frame RBM (in-lb)
AC65E-155S	Tandem w/ Pusher Axle	234	290	116	56	40,000	60,000	105,000	consult factory	
AC65E-155S (Utility Spec)	Tri w/ 2 Pushers and Tag Axle	194	280	160	54	22,000	68,000	93,000	consult factory	

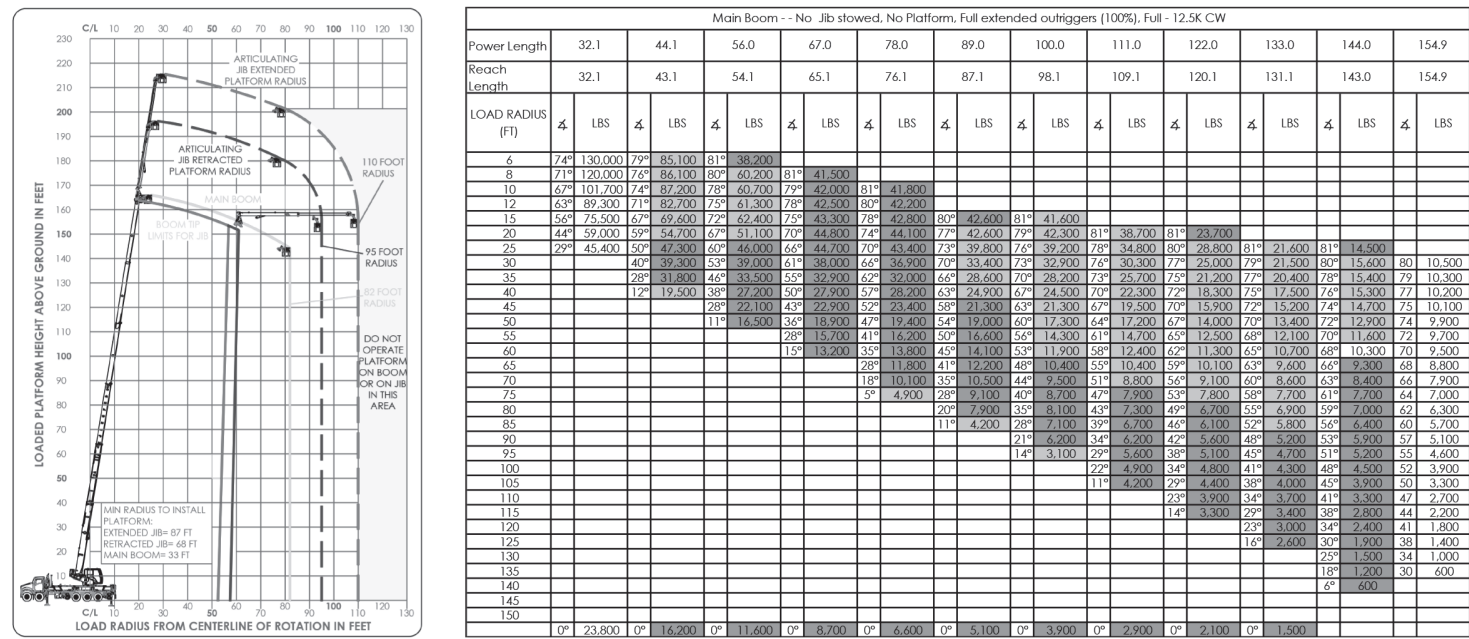


LOAD MOMENT AND AREA PROTECTION

The convenient menu navigation with an intuitive user interface displays load on hook, rated capacity percentage, boom length and angle, load radius, and operator-defined protection with audible alarms. Additionally, the AC65E comes standard with Smart-Zone Rating functionality, which uses the outrigger positions to determine where the machine has capacity for the load on hook. This provides an extra layer of safety to help prevent instability during asymmetric outrigger setups. While the display and user interface are unique to Altec, the system's hardware consists of common "off-the-shelf" components that were critically selected for their performance and serviceability.



LOAD CHART - FULL SPAN OUTRIGGERS



HYDRAULICALLY REMOVABLE COUNTERWEIGHT

For added lifting capacity, the optional Hydraulically Removable Counterweight system features a 12,500 lb tray-style design that is configurable in increments of 3,000 lbs. This system utilizes a rotation house lock system to allow for quick and easy installation/removal by the operator from inside the cab.



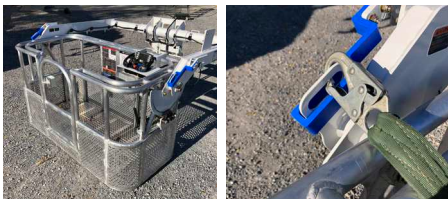
HYDRAULIC ARTICULATING JIB

Available for the first time on a machine of this size, the AC65E can be fitted with a 2-stage hydraulic articulating jib. This jib extends from 32 ft to 50 ft and is able to hydraulically articulate under load from 0 to -80 degrees. In material handling mode, this jib allows for superior up and over lifting capabilities while still maintaining a small setup envelope. In aerial mode, when equipped with this jib, the AC65E can achieve 110 ft of platform side reach, which rival most large non-insulating aerial devices on the market today.



MULTIPLE AVAILABLE CONFIGURATIONS

The AC65E was designed for multiple work applications, which means it can mount on a variety of different chassis configurations to meet your unique needs. Depending on the options selected, this unit can mount on anything from a standard single-steer, tri-drive rear chassis, up to a seven axle twin-steer configuration. It is also possible to configure this machine to meet federal bridge regulations, allowing the unit to transport without any overweight permits.



QUICK ATTACH ALUMINUM PLATFORM WITH OPTIONAL LANYARD INTERLOCK SYSTEM

Altec's class-leading safety features continue to be incorporated into the design of our Dual rated Products with the introduction of the improved Quick Attach Aluminum Platform. This system features a redesigned quick attach pinning system for improved rigidity and ease of installation, as well as a brand new all aluminum platform to resist corrosion. Additionally, this package is available with an optional lanyard alert system, to ensure operators are properly harnessed to the platform prior to operation. The lanyard interlock system provides an audible alert and prevents function if it senses the operator is not properly tied off.

800-958-2555
sales@altec.com

AIOSAC65E155S-1124-v1-r3

33 Inverness Center Parkway
Birmingham, AL 35242
Fax 205.449.4774
www.altec.com

For more complete information on Altec products and services, visit us on the web at www.altec.com.

© 2024 Altec Inc
All Rights Reserved

Material and specifications are subject to change without notice. Featured units in photos may include optional features. Please contact an Altec representative for all available options. Charts published herein are intended to be a guide only and should not be construed to warrant application for lifting purposes. Consult supplied operation manual for further details.

Altec® and the Altec logo are registered trademarks of Altec Inc in the United States and various other countries and may not be used without permission.

