



FOR NEW EQUIPMENT SALES, CALL
866.966.2969
TO SPEAK WITH AN ALTEC REPRESENTATIVE
or visit us online at altec.com

 **Altec**
TELESCOPIC CRANE

STANDARD FEATURES

- Altec LMAP (Load Moment & Area Protection) System
 - » Slew-based Zone Rating Limits Capacity Based on Outrigger Positions
 - » Rated Capacity Limiter
 - » Displays: Boom Length, Boom Angle, Load on Hook, Percent of Rated Capacity
 - » Operator Defined Audible Alarm Set-Points for Boom Angle, Length and Rotational Position
- Outrigger Boom Interlock System
- Outrigger Motion Alarm
- Anti-Two Block Device
- Winch Control at Load Hook Stow Point
- 15,000 lb 2-Speed High-Performance Piston Winch
- Rotation Resistant Wire Rope
- Boom out of Stow Alarm
- Boom Stow Latch to Allow Forward or Rear Stow of Boom
- Extra-wide Walk through Control Stations
- Outrigger downjack controls at Operator Station
- Sliding 5th Wheel with 36 inch Travel
- Heavy Duty 36,000 lb Rated Pintle Hitch
- Optional Radio Remotes

GENERAL SPECIFICATIONS

Boom Length (3-Section)	53 ft (16.2 m)
Stowed Travel Height 40 inch frame	13.0 ft (4.0 m)
Vehicle Travel Length	32.1 ft (9.78 m)
3 Position Out-and-Down Outriggers	
Main Outrigger Span	24 ft (7.3 m)
Auxiliary Outrigger Span	17.9 ft (5.4 m)
5th Wheel Height	51 in

CRANE SPECIFICATIONS

Maximum Lift Capacity	60,000 lb (27,215 kg)
Powered Sheave Height	63 ft (19.2 m)
Two Speed Winch Capacity	15,000 lb (6,803 kg)
ASME B30.5 Compliant	

Recommended safety equipment, available through Altec Supply, include wheel chocks and outrigger pads.

UNIT		RECOMMENDED CHASSIS DIM				MINIMUM RECOMMENDED CHASSIS SPECIFICATIONS				
Model	Rear Axle	CA (in)	WB (in)	AF (in)	AS (in)	Front Axle Rating (lb)	Rear Axle Rating (lb)	GVWR (lb)	Frame Sec Modulus (in ³)	Frame RBM (in-lb)
AC30-53T	Tandem	163	249	80	54	20,000	45,400	65,400	consult factory	
AC30-53T	Tandem	183	273	80	54	20,000	45,400	65,400	consult factory	

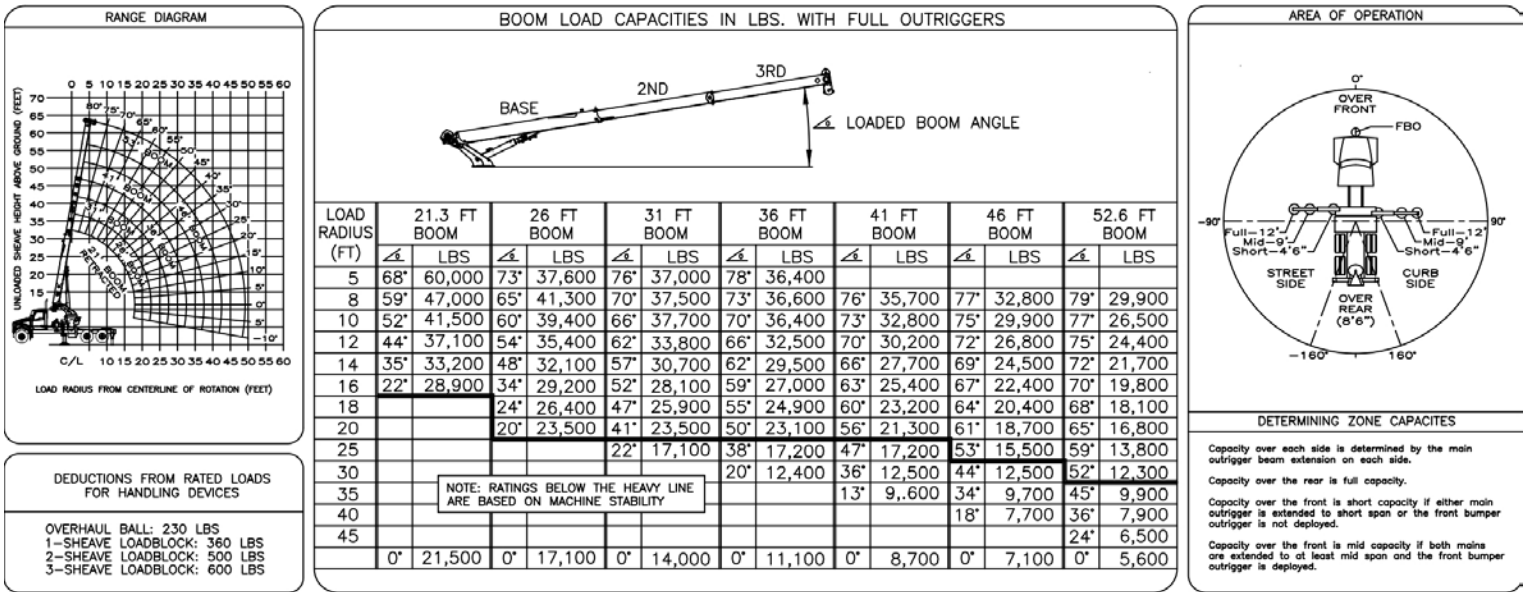
LOAD MOMENT & AREA PROTECTION WITH ZONE RATING

The convenient LMAP menu navigation with an intuitive user interface displays load on hook, rated capacity percentage, boom length and angle, load radius, and operator-defined protection with audible alarms. While this feature is unique to Altec, the system's hardware consists of common "off-the-shelf" components that were critically selected for their performance and serviceability.

To further enhance job site safety, the system also uses the position of the outriggers to determine the appropriate load capacity for each slewing area of the machine. For instance, if one side of the machine has the outriggers at full span, while the other side is at short span, the system will automatically allow for use of the full span load chart on one side, while limiting to the short span chart on the other side. If the operator tries to slew into a zone with a load above the rated capacity for that zone, the system will engage a smooth stop to the rotation system to prevent entering that zone.



LOAD CHART - FULL SPAN OUTRIGGERS



Charts published herein are intended to be a guide only and should not be construed to warrant application for lifting purposes. Consult supplied operation manual for further details.



THE MOST VERSATILE TRUCK IN YOUR FLEET

The AC30-53T was designed to be both a best in class crane as well as a top tier tractor. From the lowest in-class 51 inch fifth wheel height, to the integrated trailer supply hoses, Altec kept the truck driver in mind throughout the design process. Combine that with an available 249 inch wheelbase, and optional headache rack for all your chain storage, and you might forget you are driving a crane all together.



DESIGNED TO WORK WHERE YOU DO

The AC30-53T offers maximum jobsite flexibility. A low auxiliary outrigger profile allows the crane to be setup regardless of trailer positioning, and the three position main outriggers allow for easy setup in tight job sites.



SAFE TRAILER ACCESS

The AC30-53T offers the safest solution for accessing the trailer from the operator's station. Wide walk-through control stations give the operator nearly 2 feet of clear space to step up onto a trailer.



BOOMREST NOT REQUIRED

Through the use of an innovative lift cylinder locking latch, the AC30-53T allows for the boom to be easily stowed forward or rearward without the hassle of having to move a boomrest.



866-966-2969
sales@altec.com

AIOSAC3053T-219

33 Inverness Center Parkway
Birmingham, AL 35242
Fax 205.449.4774
www.altec.com

For more complete information on Altec products and services, visit us on the web at www.altec.com.

© 2019 Altec Inc
All Rights Reserved

Material and specifications are subject to change without notice. Featured units in photos may include optional features. Please contact an Altec representative for all available options. Charts published herein are intended to be a guide only and should not be construed to warrant application for lifting purposes. Consult supplied operation manual for further details.

Altec® and the Altec logo are registered trademarks of Altec Inc in the United States and various other countries and may not be used without permission.

