



FOR NEW EQUIPMENT SALES, CALL  
**800.958.2555**  
TO SPEAK WITH AN ALTEC REPRESENTATIVE  
or visit us online at [altec.com](http://altec.com)

 **Altec**<sup>®</sup>  
TELESCOPIC ARTICULATING  
AERIAL DEVICE

# AT248F

## FEATURES

- Compensated Articulating Arm
- Hydraulic Boom Extension
- Convenient Lower Control Station
- Multi-Function Proportional Single Handle Upper Control
- Platform Access from the Ground
- Fixed Fly Boom Designed for Low Travel Height
- 180° Platform Rotator
- Hydraulic Self-Leveling Platform
- Emergency Lowering Valve at Platform
- Platform Leveling at Upper and Lower Controls
- Torsion Bars for Stability
- Corrosion-Resistant Aluminum Body
- Large Capacity Ladder Tunnel and Long Bulb Storage
- Adjustable/Modular Shelving
- Easily Mounted on a 19,500 lb (8,845 kg) GVWR Chassis
- Back Up Alarm

## OPTIONS

- 84 in (2,134 mm) CA Aluminum Body
- 108 in (2,743 mm) CA Aluminum Body
- 120 in (3,048 mm) CA Aluminum Body
- 27 x 30 x 42 in (686 x 762 x 1,066 mm) One-Man Steel Platform
- Secondary Stowage System
- Engine Start/Stop
- Cone Holder
- Platform Cover
- 110V Outlet at Boom Tip
- Back Up Camera
- Interior Lighting

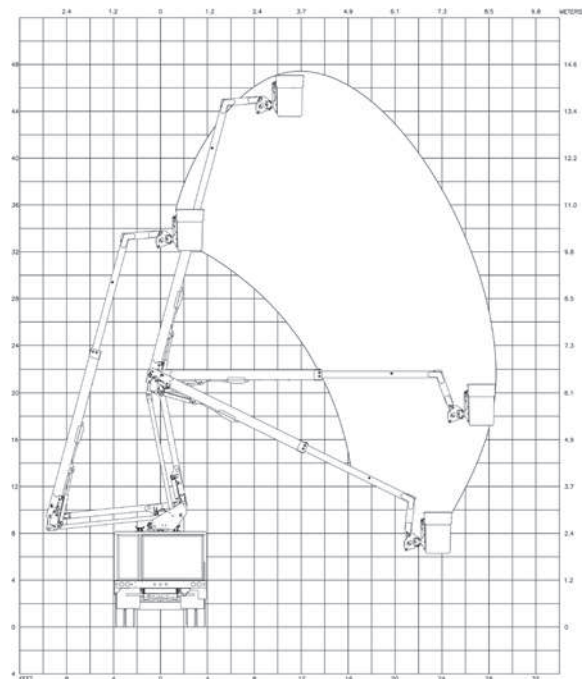
Recommended safety features include fall protection system and wheel chocks.

SPECIFICATIONS	Ground to Bottom of Platform	43.6 ft (13.3 m)
	Working Height	48.6 ft (14.8 m)
	Maximum Reach from Centerline of Rotation (at Platform Height)	28.5 ft (8.7 m) 16 ft (4.8 m)
	Platform Dimensions	26 x 30 x 42 in (661 x 762 x 1,067 mm)
	Platform Capacity	350 lb (159 kg)
	Stowed Travel Height*	10.5 ft (3.2 m)

\*Based on a 40 in (1,016 mm) chassis frame height.



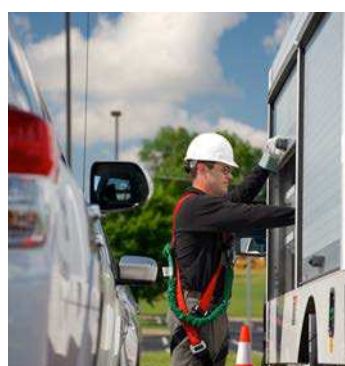
## REACH DIAGRAM



### LOW PROFILE DESIGN FOR REDUCED TRAVEL HEIGHT



### ROLL UP DOORS FOR EASE OF BODY ACCESS



### OPTIONAL ONE-MAN OPEN STEEL PLATFORM



### SINGLE HANDLE PROPORTIONAL CONTROL



For more complete information on Altec products and services, visit us on the web at [www.altec.com](http://www.altec.com). Material and specifications are subject to change without notice. Featured units in photos may include optional features. Please contact an Altec representative for all available options. Altec® and the Altec logo are registered trademarks of Altec Inc. in the United States and various other countries and may not be used without permission.

© 2015 Altec Inc. All Rights Reserved. AIOSAT248F-1115-v2