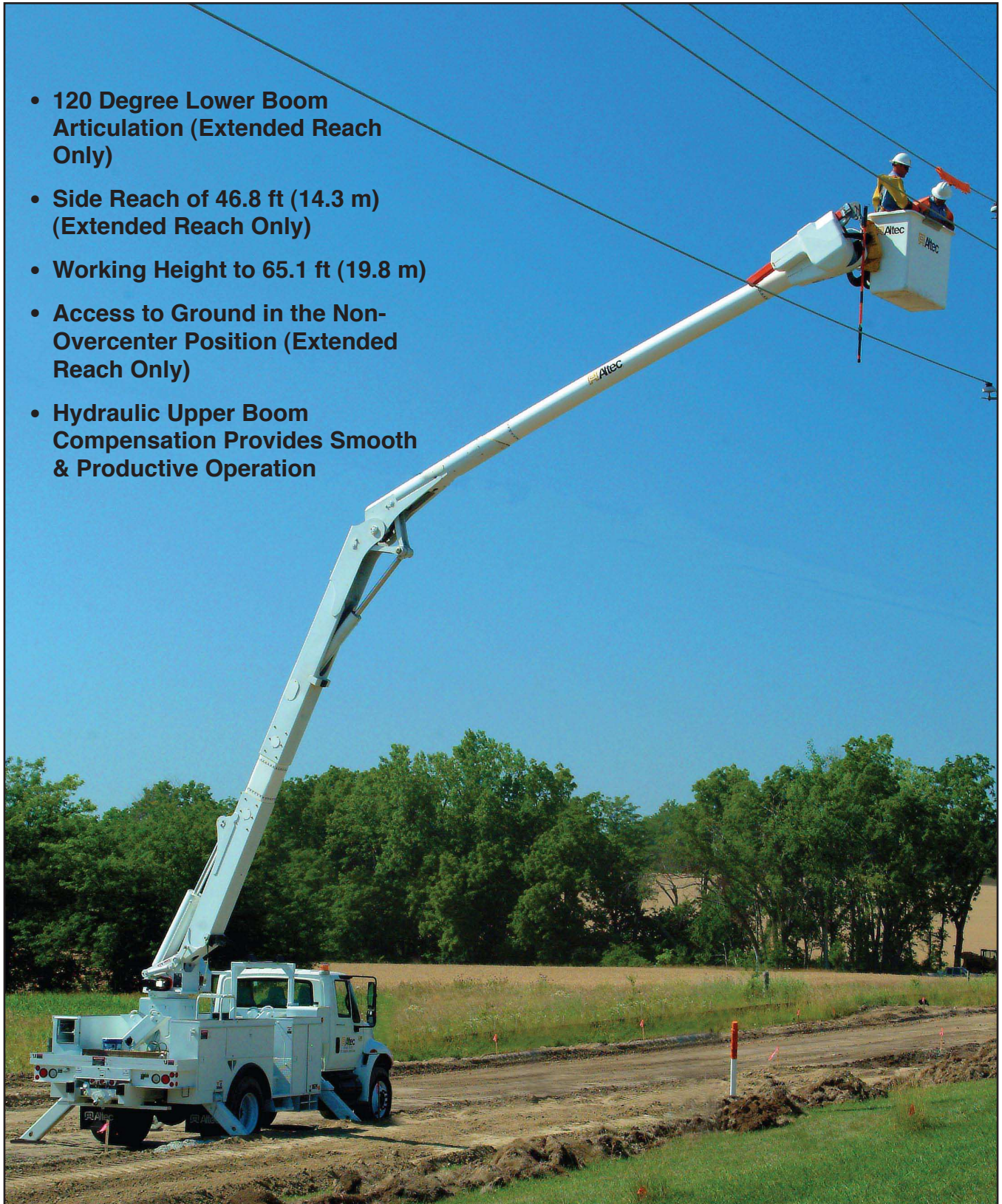




# Altec AA Series Non-Overcenter Aerial Device

- 120 Degree Lower Boom Articulation (Extended Reach Only)
- Side Reach of 46.8 ft (14.3 m) (Extended Reach Only)
- Working Height to 65.1 ft (19.8 m)
- Access to Ground in the Non-Overcenter Position (Extended Reach Only)
- Hydraulic Upper Boom Compensation Provides Smooth & Productive Operation







# Altec AA Series Specifications

## STANDARD FEATURES

- Platform Leveling System – Chain and Rod in Upper Boom
- Lower Boom Non-Overstow Protection System
- Hydraulic Platform Tilt
- Material Handling System with Hydraulic Extend Jib
- Altec ISO-Grip® Control System
- Outrigger Motion Alarm
- Outrigger Boom Interlock System
- Electric/Hydraulic Outrigger Controls
- Back-Up Alarm
- Powder Coat Painted Prior to Assembly
- Two Sets of Hydraulic Tool Circuits at Each Platform
- Diagnostic Pressure Test Quick Disconnect Couplings
- Continuous Rotation
- Hydraulic Platform Rotators (if so equipped)
- Emergency Stop Valves at all Upper and Lower Control Stations
- Pilot Pressure System

## OPTIONS

- Automatic Upper Boom Stow System
- Engine Start/Stop
- Remote Secondary Stowage System
- Jib Adapter
- Phase Lifting Jib Attachment
- One 2-Man Platform
- 180 Degree Rotator, End Hung, Personnel Only Platform

## RECOMMENDED FEATURES

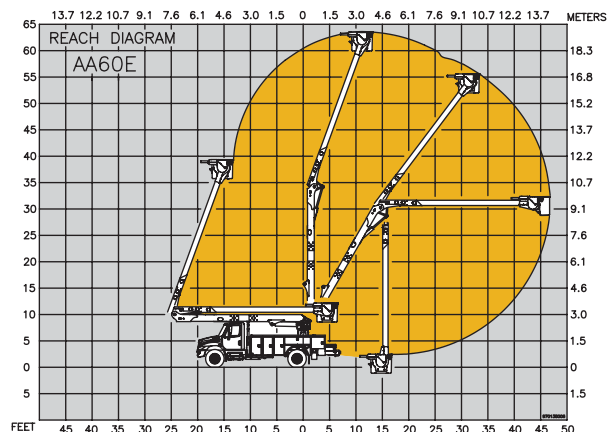
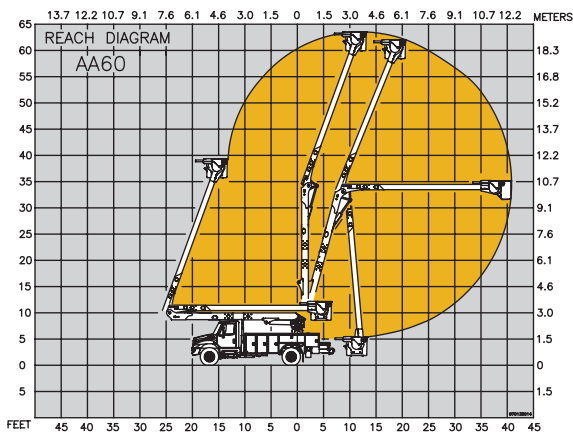
- Fall Protection System
- Platform Liner
- Wheel Chocks
- Outrigger Pads

## GENERAL SPECIFICATIONS

	AA50	AA55	AA60	AA50E	AA55E	AA60E AA60E
Ground to Bottom of Platform	50.1 ft (15.3 m)	55.1 ft (16.8 m)	60.1 ft (18.3 m)	50.1 ft (15.3 m)	55.1 ft (16.8 m)	60.1 ft (18.3 m)
Working Height*	55.1 ft (16.8 m)	60.1 ft (18.3 m)	65.1 ft (19.8 m)	55.1 ft (16.8 m)	60.1 ft (18.3 m)	65.1 ft (19.8 m)
Maximum Reach from Centerline of Rotation to Lip of Platform	34.6 ft (10.5 m)	37.7 ft (11.5 m)	40.8 ft (12.4 m)	39.1 ft (11.9 m)	43.1 ft (13.1 m)	46.8 ft (14.3 m)
Height at Bottom of Platform at Maximum Reach	27.5 ft (8.4 m)	29.2 ft (8.9 m)	31.2 ft (9.5 m)	24.7 ft (7.5 m)	26.6 ft (6.3 m)	28.1 ft (8.6 m)
Stowed Travel Height (approx)	11.5 ft (3.5 m)	11.5 ft (3.5 m)	11.5 ft (3.5 m)	11.5 ft (3.5 m)	11.5 ft (3.5 m)	11.5 ft (3.5 m)
Platform Capacity	up to 700 lb (318 kg)	up to 700 lb (318 kg)	up to 700 lb (318 kg)	up to 700 lb (318 kg)	up to 700 lb (318 kg)	up to 700 lb (318 kg)
Jib Capacity (max)	2000 lb (909 kg)	2000 lb (909 kg)	2000 lb (909 kg)	2000 lb (909 kg)	2000 lb (909 kg)	2000 lb (909 kg)
Lower Boom Articulation, degrees	0 to 105	0 to 105	0 to 105	0 to 120	0 to 120	0 to 120
Upper Boom Articulation, degrees	0 to 173	0 to 173	0 to 173	0 to 173	0 to 173	0 to 173
Rotation	Continuous	Continuous	Continuous	Continuous	Continuous	Continuous

\*Based on 40 in (1016 mm) Chassis Frame Height

## REACH DIAGRAMS



Altec Aerial Devices meet or exceed all applicable ANSI Standards as of the date of manufacture. Altec reserves the right to improve models and change specifications without notice or obligation.

Altec Sales and Service



Manufacturing and Service Facilities Located  
Throughout the United States and Canada  
[www.altec.com](http://www.altec.com)

**Altec Industries, Inc.**

Post Office Box 10264  
Birmingham, Alabama 35202  
Phone 205/991-7733  
Fax 205/991-9993

ALT1018424  
AA Series-3M-7/09

Courtesy of CraneMarket