



Specifications

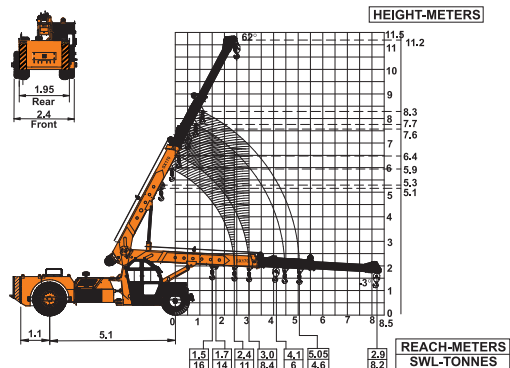
SX170

LIFTING CAPACITY (Free on wheels)	16 Tonnes
ENGINE	KOEL 4R810 NA (BS-III), 4 Cylinder Water Cooled Engine or suitable engine
Rated Power	49.5 BHP (36.41 KW) AT 2200 RPM
ELECTRICAL SYSTEM	12V, Negative earth with 35 Amp. Alternator & 75 amp. hr. battery
STEERING	Power steering through orbitrol with twin hydraulic double acting cylinders having 45° articulation on either side.
HYDRAULIC SYSTEM	<ul style="list-style-type: none"><li>● Gear / Intra Vane type Main Pump.</li><li>● Three spools control valve with built in Relief valve.</li><li>● Suction line has 100 mesh size Strainer while return line is fitted with 25 micron full flow filter.</li><li>● Two double acting lift cylinders, two double acting steering cylinders and one double acting extension cylinder.</li></ul>
TRANSMISSION	Heavy Duty, sliding mesh with 6 forward and 2 reverse speeds with high low range selector.
Clutch	Hydraulically operated, heavy duty, dry friction, cerametallic clutch plate with diaphragm type pressure plate
Top Speed	29 KMPH without load
BRAKES	
Service	<ul style="list-style-type: none"><li>● Fully air operated S Cam dual brakes on front wheels and air operated disc brakes on rear wheels. Brakes are actuated through a single pedal.</li></ul>
Parking	<ul style="list-style-type: none"><li>● Pneumatically operated fail safe type</li></ul>
TELESCOPIC BOOM	Three part slotted boom with hydraulically operated synchronized extensions (11.2 mtrs height).
BOOM LUFFING	
Range	-3° TO + 62°
FLUID CAPACITIES	
Engine	8.00 Ltrs.
Fuel Tank	120.00 Ltrs
Hydraulic Tank	125.00 Ltrs.
Transmission	57.00 Ltrs.

NOTE: • All above specifications are pertaining to SX170 model fitted with 11.2 Mtrs. boom.  
• Rated loads are on the basis of operation on firm and level surface.

TYRES	
Front	12.00 x 20 – 18 PR (4Nos.)
Rear	14.00 x 25 – 20 PR (2 Nos.)
SAFETY	<ul style="list-style-type: none"><li>● Hose failure protection.</li><li>● Audio over hoisting indication</li><li>● Safety brakes on hoist.</li><li>● Self-adjusting hook block.</li><li>● Front and rear tyre guard(s)</li></ul>
HOIST	Winch is driven by hydraulic motor and fitted with rope tensioner. Hoisting is provided through self adjusting hook block employing 4 falls of 13 mm dia rope
Hoist Speed	50 Mtrs./Min. (Line Speed)
STANDARD EQUIPMENT	<ul style="list-style-type: none"><li>● Front Outriggers</li><li>● ROPS fully enclosed wide view front mounted cabin</li><li>● Front and Rear work lights</li><li>● Reflectors and rear view mirror</li><li>● Tool kit</li><li>● Cabin Fan</li><li>● Front Tyre Protector</li><li>● Helper / Slinger Seat(s)</li><li>● Rear view camera with LCD display</li><li>● Gauges :-<ul style="list-style-type: none"><li>a) Water Temperature</li><li>b) Engine Oil Pressure</li><li>c) Fuel Gauge</li><li>d) RPM meter cum hour recorder</li><li>e) Air pressure</li></ul></li></ul>
OPTIONAL EQUIPMENT	<ul style="list-style-type: none"><li>● Fly jib (Max Capacity : 1.25 Tonnes)</li><li>● Spark arrestor</li><li>● Safe load indicator/ LMI</li><li>● Over Hoist hydraulic cutoff</li><li>● Fire extinguisher</li><li>● Beacon Light</li><li>● 4 part slotted boom, 3 part hydraulically operated &amp; synchronized and 4th part power extended (15.5m &amp; 18.2m height)</li><li>● High torque 60 bhp engine</li><li>● Drag winch</li><li>● Cabin front glass protector</li><li>● Front &amp; side proximity sensors</li></ul>
OPERATING WEIGHT	14900 Kgs

ACE SX170 Model Crane fitted with  
3 Part slotted boom (11.2 Mtrs. height)



Full rated lifting capacity available in articulated / steered condition.



1 CABIN  
Front mounted, ergonomically  
designed spacious Cabin for  
better visibility & driveability.



2 SLOTTED BOOM  
Facilitates easier load  
positioning & fitted with self  
adjusting hook block.



3 STABLE DESIGN  
3 Point Oscillation Joint provides for  
safer and stable operation.



4 INCREASED VISIBILITY  
Bigger size front windscreen  
provided for better visibility and  
safe operation.



5 REAR DECK  
Spacious & well laid out rear  
deck for storing lifting tackles  
etc. and provides ample  
space for slingers/helpers.



6 GROUND CLEARANCE  
Ground clearance of 300mm  
facilitates easier rough terrain  
operations.



7 STEERING WHEEL & CONTROLS  
Steering wheel is provided as a  
standard fitment, which along with  
ergonomically placed operator  
console and instrument cluster  
ensures ease of operation.



8 OPTIMIZED KINEMATICS AND LOW C.G.  
SX170 crane has been designed  
with low Center of Gravity (C.G.)  
providing best in class stability and  
operational safety

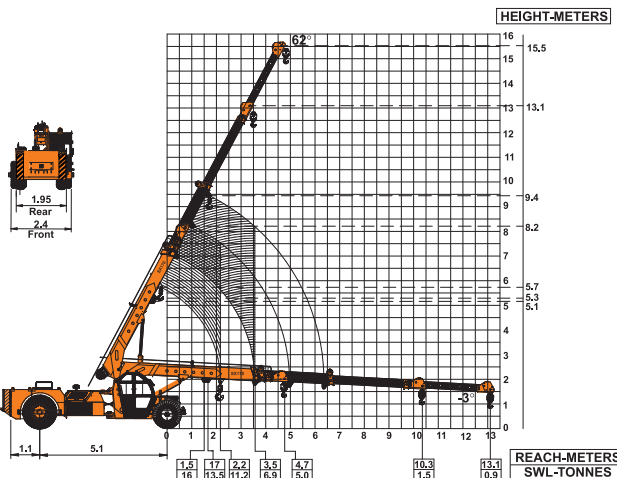


9 EASY MAINTENANCE  
The engine is easily accessible  
for daily maintenance checks  
including battery, air filter,  
oil level and cooling system.

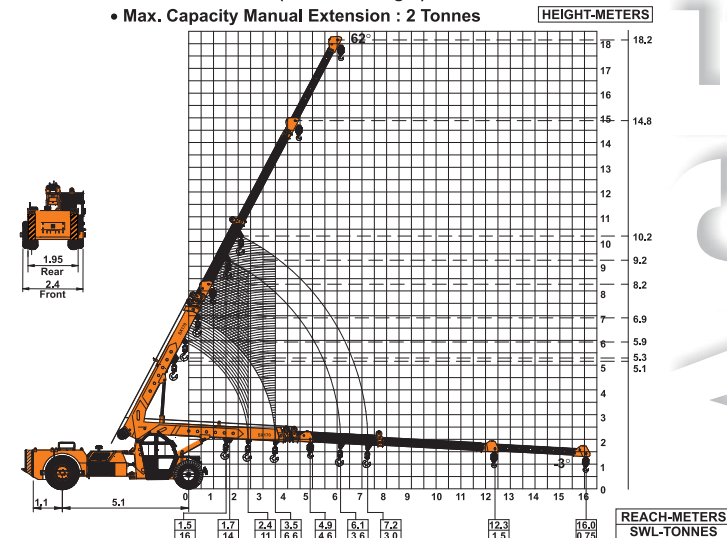


ACE SX170 Model Crane fitted with  
4 Part slotted boom (15.5 Mtrs. height)  
• Max. Capacity Manual Extension : 2 Tonnes

ACE SX170 Model Crane fitted with  
4 Part slotted boom (18.2 Mtrs. height)  
• Max. Capacity Manual Extension : 2 Tonnes



Full rated lifting capacity available in articulated / steered condition.



Full rated lifting capacity available in articulated / steered condition.

Advantages

Advantages