

ACE

15XW

Hydraulic Mobile Crane

Capacity : 16 tonnes

Engine Power : 76 bhp.

Rough terrain and rugged
articulated pick n move crane.

ACE

INDIA'S NO. 1
MOBILE CRANE COMPANY



Nothing beats an **ACE**

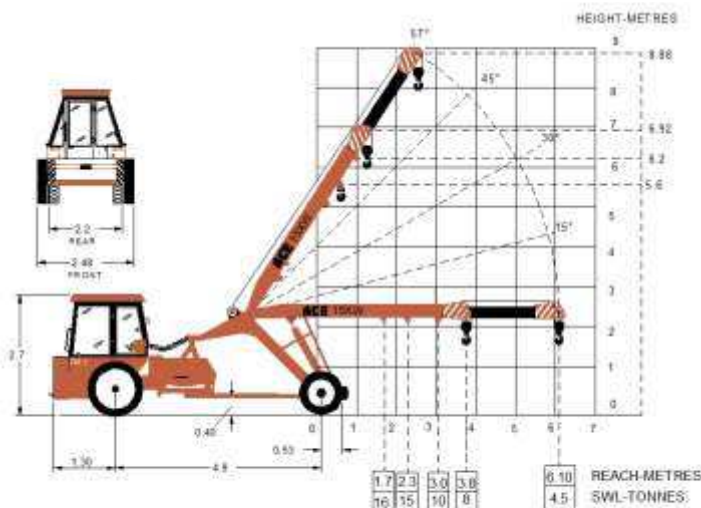
Specifications

15 XW

LIFTING CAPACITY (Free on wheels)	16 Tons
ENGINE	KIRLOSKAR 4R1040TC BS-III, 4 cylinder, water cooled turbo charged engine generating 76.0 HP (56KW @ 2200 rpm) or any other suitable equivalent engine.
TRANSMISSION	Synchro shift shuttle with torque converter & synchronized gear box of Carraro make. Single switch forward reverse function with 4 forward & 4 reverse speeds or suitable transmission.
Top Speed	40 KMPH without load.
STEERING	Hydraulically operated with 55° articulation on either side and turning radius of 6.5 mtrs. (approx) on outer rear wheels.
BRAKES	Pneumatically assisted hydraulic brakes. Front and rear brakes are actuated through a single pedal. Parking brake is Provided.
HYDRAULIC SYSTEM	<ul style="list-style-type: none"> ● Intra vane/gear type main pump. ● Four spools control valve (heavy duty). ● Suction line has 100 mesh size strainer while return line is fitted with 25 micron full flow filter. ● Two double acting lift cylinders, two double acting steering cylinders and one double acting extension cylinder.
ELECTRICAL SYSTEM	12V. heavy duty battery with negative earth & suitable alternator.

TELESCOPIC BOOM	Two part boom with hydraulically operated extension of 2300 mm stroke.
Telescoping Time	12-14 Seconds.
BOOM LUFFING	
Range	-3° to + 57°
Time	20 Seconds.
HOIST	Winch is driven by hydraulic motor employing 4 falls of 13 mm dia rope with rope tensioner.
Hoist Speed	50 Mtrs./Min. (Line speed)
TYRES	
Front	12.00 x 20 - 18 PR (4 Nos.)
Rear	14.00 x 25 - 20 PR (2 Nos.) (Rear tyres are water ballasted)
SAFETY	<ul style="list-style-type: none"> ● Audio overload indication. ● Hose failure protection. ● Audio over hoisting indication. ● Safety brakes on hoist. ● Cylinder guards.
FLUID CAPACITIES	
Engine	11.00 Ltrs.
Fuel Tank	85.00 Ltrs.
Hydraulic Tank	135.00 Ltrs.
Transmission	20.00 Ltrs.
Rear axle	3.00 Ltrs.
Differential housing	14.50 Ltrs.
STANDARD EQUIPMENT	<ul style="list-style-type: none"> ● ROPS fully enclosed wide view cabin with rotomould canopy. ● Front tyre protector. ● Front and rear work lights. ● Reflectors & rear view mirror. ● Tool kit. ● Gauges :- <ul style="list-style-type: none"> a) Water temperature. b) Engine oil pressure. c) Ammeter. d) Hour recorder e) Air pressure f) T.C. temprature
OPTIONAL EQUIPMENT	<ul style="list-style-type: none"> ● Fly jib - 2.75 Mtrs. box section type with rope travel attachment. ● Fly jib - 4 Mtrs. lattice type. ● Hydrostatic steering. ● 3 part boom with 2 hydraulic extensions. (height 11.75 mtrs.) ● 4 part boom with 2 hydraulic & 1 manual extensions (height 18 mtrs.) ● Spark arrester ● City type double driving cabin
VARIANT	Fitted with SAME 1000.4, 4 Cylinder, water cooled diesel engine generating 68 BHP @2200 rpm & mechanical transmission. Available in 2 part, 3 part and 4 part, 15.5 Mtrs boom configuration only.
OPERATING WEIGHT	12800 kgs.

ACE 15 XW Model Crane fitted with 2 Part Boom



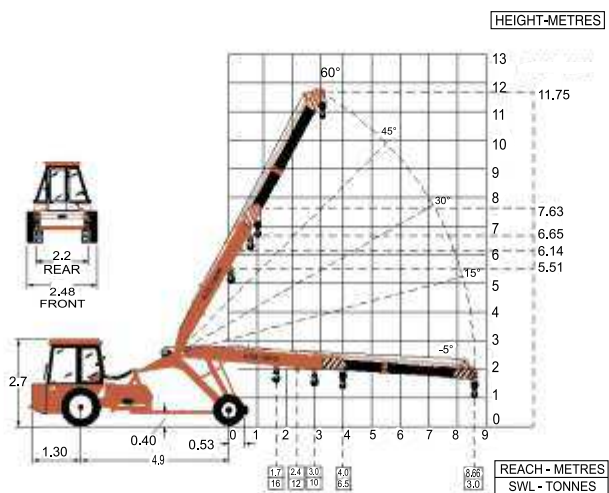


CARRARO hydraulic transmission

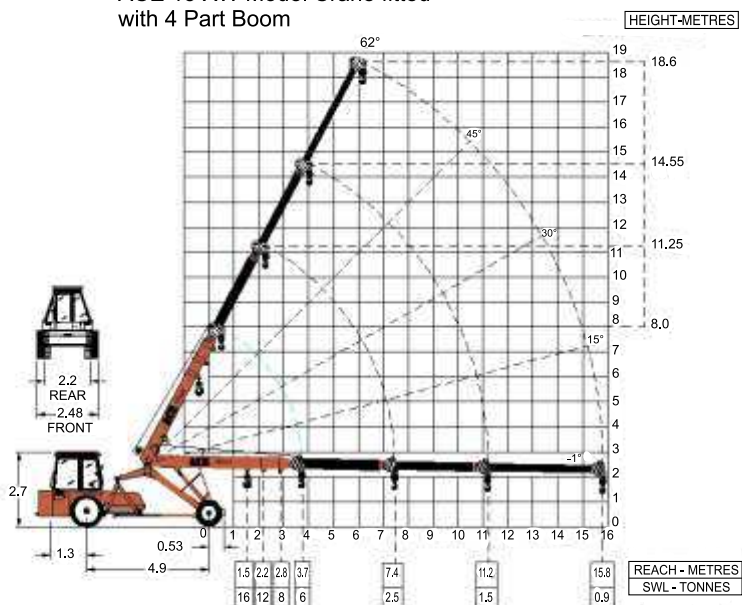


CARRARO differential & rear axle

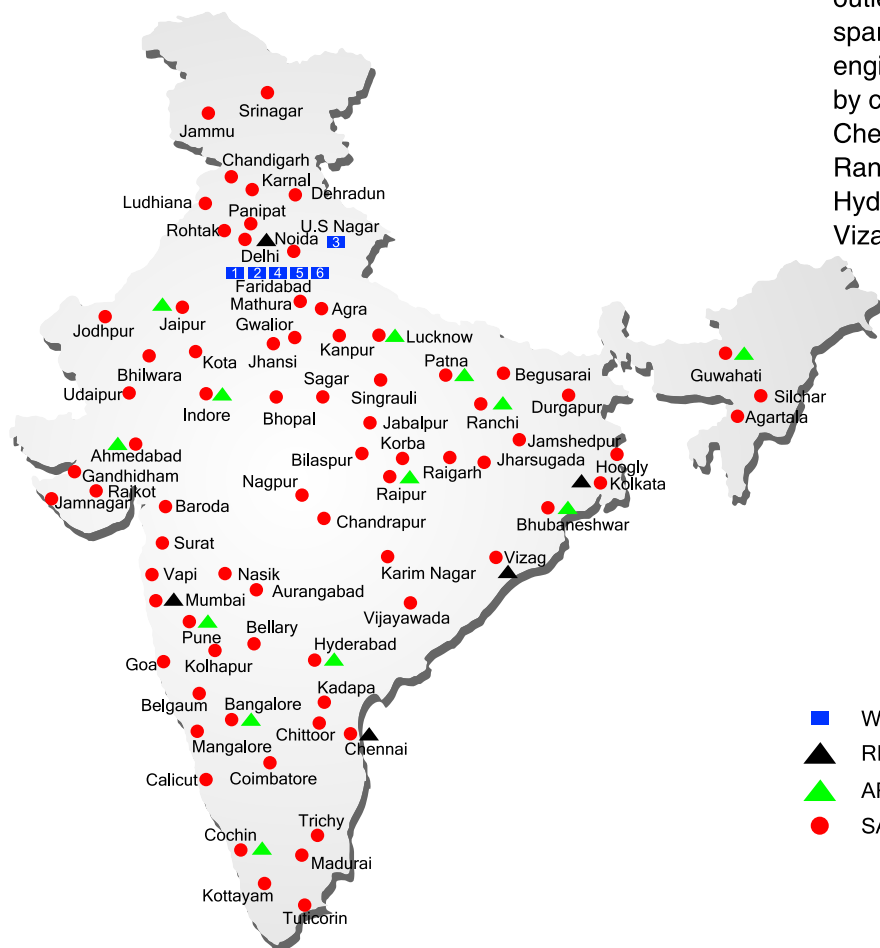
ACE 15 XW Model Crane fitted with 3 Part Boom



ACE 15 XW Model Crane fitted with 4 Part Boom



ALL INDIA NETWORK



SPARE PARTS & SERVICE

ACE has all India Sales and Service network operating out of all the major cities. These outlets are fully equipped to provide genuine spare parts and services by company trained engineers. These outlets are further supported by company officials based at Delhi, Mumbai, Chennai, Kolkata, Ahmedabad, Pune, Jaipur, Ranchi, Raipur, Indore, Bhubneshwar, Lucknow, Hyderabad, Bangalore, Guwahati, Patna, Vizag & Cochin

- WORKS
- ▲ REGIONAL OFFICES
- ▲ AREA OFFICES
- SALES AND SERVICE DEALERS



ACE

Action Construction Equipment Ltd.

Contact:



ACE / Original equipment manufacturer reserves the right to alter any specifications without prior notice. Dimensions, weights & capacities mentioned herein are variable by $\pm 5\%$. Accessories shown are not part of the Standard Equipment.

MARKETING H.Q.

5 th Floor, "TDI Center", Jasola , New Delhi - 25
Ph.: +91-11-40549900 (30 Lines) Fax : 40549922
E-mail: marketing@ace-cranes.com

MUMBAI OFFICE

31, "Kalpataru Court", Chembur, Mumbai - 71
Ph.: 022 - 25206846 Telefax : 25207071
E-mail: acemumbai@ace-cranes.com

KOLKATA OFFICE

"Fomra Towers" 84-A, Second Floor, AJC Bose Road,
Kolkata - 14. Ph. 033-32578307, Telefax: 22274428
E-mail: acekolkata@ace-cranes.com

CHENNAI OFFICE

1st Floor, "Alsa Regency", 165, Eldams Road,
Alwar Pet, Chennai - 18
Ph.: 044 - 24314253 Telefax : 24314252
E-mail: acechennai@ace-cranes.com



www.ace-cranes.com

15XW/11/11

Courtesy of Crane.Market