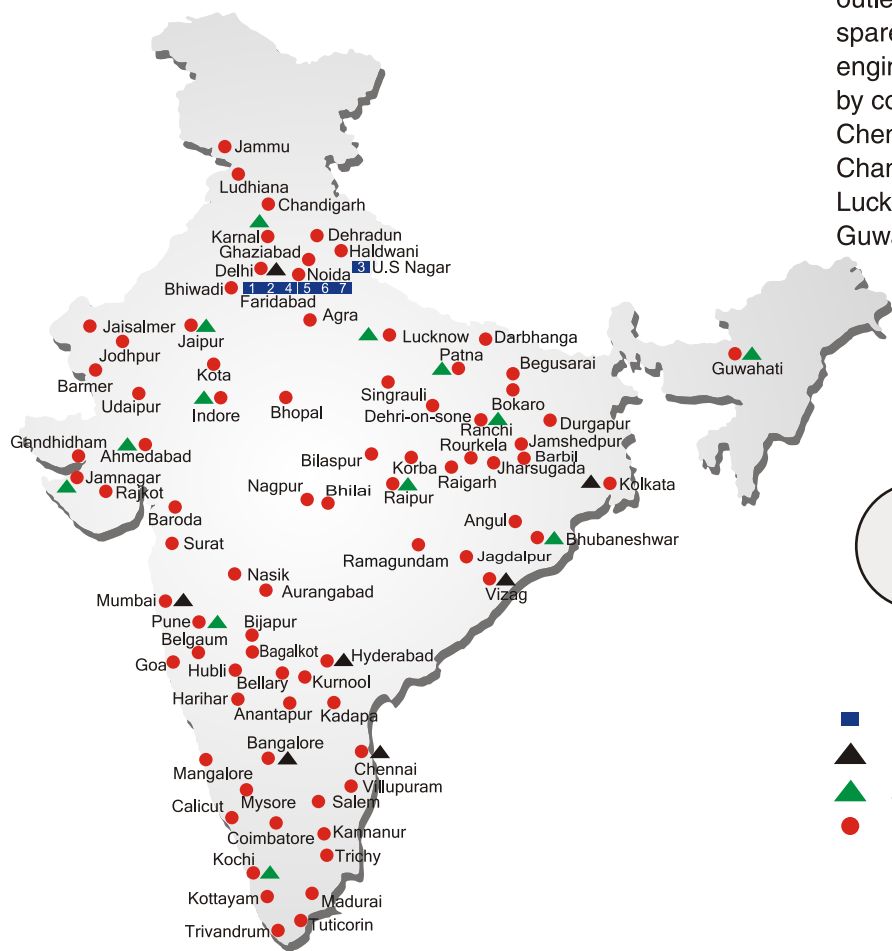


ALL INDIA NETWORK



SPARE PARTS & SERVICE

ACE has all India Sales and Service network operating out of all the major cities. These outlets are fully equipped to provide genuine spare parts and services by company trained engineers. These outlets are further supported by company officials based at Delhi, Mumbai, Chennai, Kolkatta, Ahmedabad, Pune, Jaipur, Chandigarh, Ranchi, Raipur, Indore, Bhubneshwar, Lucknow, Jamnagar, Hyderabad, Bangalore, Guwahati, Patna, Vizag & Cochin.

CUSTOMER CARE

TOLL FREE No
1800 1800 004

- WORKS
- REGIONAL OFFICES
- AREA OFFICES
- SALES AND SERVICE DEALERS

MARKETING H.Q.

5th Floor, "TDI Center", Jasola, New Delhi - 25
Ph.: +91-11-40549900 (30 Lines), Fax: 40549922
E-mail: marketing@ace-cranes.com, works@ace-cranes.com

REGISTERED OFFICE

Dudhola Link Road, Dudhola, Palwal-121102, Haryana
Ph.: +91-1275-280111 , Fax: +91-1275-280133
CIN : L74899HR1995PLC053860

MUMBAI OFFICE

31, "Kalpataru Court", Chembur, Mumbai - 74
Ph.: +91-22-25206846, Telefax: 25207071
E-mail: acemumbai@ace-cranes.com

KOLKATA OFFICE

"Forma Towers" 84-A, Second Floor, AJC Bose Road, Kolkata - 14. Ph.: +91-33-32578307, Telefax: 22274428
E-mail: acekolkatta@ace-cranes.com

CHENNAI OFFICE

1st Floor, "Alsa Regency", 165, Eldams Road, Alwar Pet, Chennai - 18
Ph.: +91-44-24314253, Telefax: 24314252
E-mail: acechennai@ace-cranes.com

ACE

Action Construction Equipment Ltd.

Contact:



ACE reserves the right to alter any specifications without prior notice, Dimensions, weights & capacities mentioned herein are variable by ± 5%, Accessories if shown are not part of the Standard Equipment.



www.ace-cranes.com

14XW12/2014

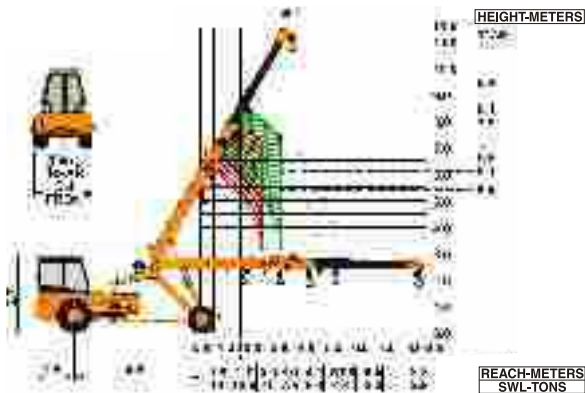


Specifications

14XW

LIFTING CAPACITY (Free on wheels)	14 Tonnes
ENGINE	Simpson's S433(I) F1 (CEV BS-III), 4 cylinder, water cooled diesel engine OR suitable equivalent engine
Rated Power	48 BHP (36KW) at 2200 RPM
TRANSMISSION	Heavy duty, sliding mesh with 6 forward and 2 reverse speeds with high low range selector.
Clutch	Heavy duty, single, dry friction, wire woven clutch plate with diaphragm type pressure plate.
Top Speed	28 KMPH without load.
HYDRAULIC SYSTEM	<ul style="list-style-type: none">● Gear/Intra vane type main pump.● Four spools control valve. (heavy duty)● Suction line has 100 mesh size strainer while return line is fitted with 25 micron full flow filter.● Two double acting lift cylinders, two double acting steering cylinders and one double acting extension cylinder.
POWER STEERING	Articulation through 2 hydraulic cylinders 55° articulation on either side and turning radius of 6.5 Mtrs. (approx) on outer rear wheels.
BRAKES	Pneumatically assisted hydraulic brakes. Front and rear brakes are actuated through a single pedal. Parking brake is Provided.
TELESCOPIC BOOM	Three part boom with hydraulically operated synchronised extensions (11.25 mtrs. height)
Telescoping Time	14 Seconds.

ACE 14 XW Model Crane fitted
with 3 part slotted boom (11.25 Mtrs. height)

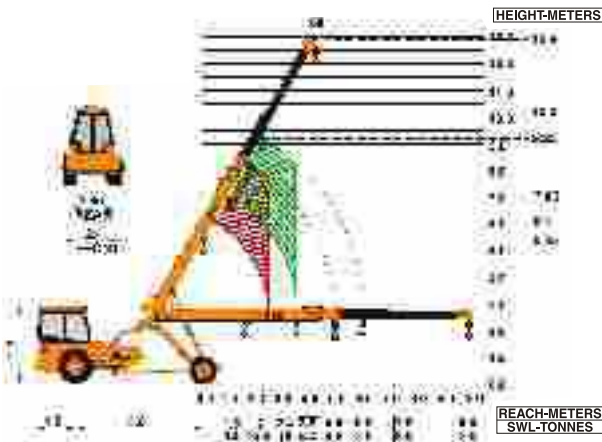


NOTE: • All above specifications are pertaining to 14XW model fitted with 3 part boom
• Rated loads are on the basis of operation on firm and level surface.

BOOM LUFFING Range	-4° to + 60°
Time	20 ± 3 Seconds.
HOIST	Winch is driven by hydraulic motor and fitted with hook block employing 4 falls of 13 mm dia rope.
Hoist Speed	50 Mtrs./Min. (Line speed)
FLUID CAPACITIES	
Air Cleaner	0.75 Ltrs.
Engine	8.00 Ltrs.
Fuel Tank	50.00 Ltrs.
Hydraulic Tank	125.00 Ltrs.
Transmission	57.00 Ltrs.
ELECTRICAL SYSTEM	12V. Negative earth with 35 Amp. alternator and 75 Amp hr. battery.
TYRES	
Front	11.00 x 20 - 16 PR (4 Nos.)
Rear	13.00 x 24 - 12 PR (2 Nos.)
SAFETY	<ul style="list-style-type: none">● Audio overload indication.● Hose failure protection.● Audio over hoisting indication.● Safety brakes on hoist.● Cylinder guards.
STANDARD EQUIPMENT	<ul style="list-style-type: none">● ROPS fully enclosed wide view cabin with rotomould canopy.● Front tyre protector.● Front and rear work lights.● Reflectors & rear view mirror.● Tool kit.● Gauges :- a) Water temperature. b) Engine oil pressure. c) RPM meter cum hour recorder d) Air pressure
OPTIONAL EQUIPMENT	<ul style="list-style-type: none">● Fly jib.● Steering Wheel● Spark arrester● Air Brakes● 3 part slotted boom with self adjusting Hook Block (fully hydraulic-12.9 mtrs. height)● 4 part slotted boom with self adjusting Hook Block (one manual extension- 15.1 mtrs. height)● Over hoisting hydraulic cutoff● Safe load indicator / LMI● City type double driving cabin
OPERATING WEIGHT	12000 kgs.



ACE 14 XW Model Crane fitted
with 3 part slotted boom (12.90 Mtrs. height)



ACE 14 XW Model Crane fitted
with 4 part slotted boom (15.1 Mtrs. height and one manual Extension).

