



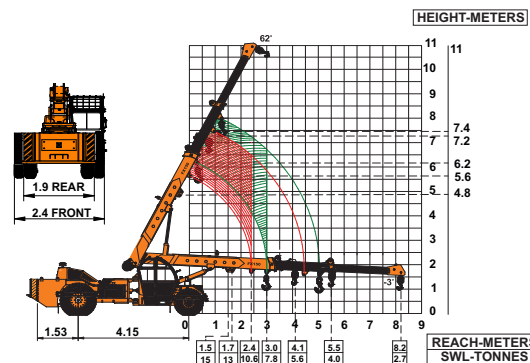
Specifications

FX150

LIFTING CAPACITY (Free on wheels)	15 Tonnes
ENGINE	Tata 4 cylinder, water cooled diesel engine or equivalent engine
Rated Power	49 bhp at 2200 RPM
STEERING	Full power orbitrol with twin hydraulic double acting cylinders and 45° articulation on either side
Turning Radius	6.5 mtrs (approx)
TRANSMISSION	Heavy duty TATA synchromesh transmission with 8 forward and 2 reverse speeds and hi-low drive selector for creep speed
Top Speed	32 KMPH on even metaled road (without load)
Gradeability	40% (unladen)
HYDRAULIC SYSTEM	<ul style="list-style-type: none">● Gear/Intra Vane type Main Pump● Three spools control valve with built in Relief valve● Suction line has 100 mesh size strainer while return line is fitted with 25 micron full flow filter● Two double acting lift cylinders, two double acting steering cylinders and one double acting extension cylinder
BRAKES	<ul style="list-style-type: none">● Dual Circuit Brakes● Fully air actuated brakes on rear wheels and pneumatically assisted hydraulic brakes are provided on front wheels● Parking brake is pneumatically operated, fail safe type
ELECTRICAL SYSTEM	12V. Negative earth with 35 amp. Alternator & 75 amp. hr. battery
TELESCOPIC BOOM	Three part slotted boom with hydraulically operated synchronized extensions
TYRES	11.00 x 20 - 16 PR (4 Nos.) 14.00 x 25 - 20 PR (2 Nos.)

Wheel base	4150 mm
Wheel track	Front 1900 mm Rear 1800 mm
HOIST	Winch is driven by hydraulic motor and fitted with rope tensioner. Hoisting is provided through self adjusting hook block employing 4 falls of 13 mm dia rope
Hoist Speed	50 Mtrs./Min. (Line speed)
BOOM LUFFING Range	-3° to + 62°
SAFETY	<ul style="list-style-type: none">● Hose failure protection● Audio over hoisting indication● Safety brakes on hoist● Self adjusting hook block● Front and rear wheel guards
STANDARD EQUIPMENT	<ul style="list-style-type: none">● Front mounted fully enclosed wide view cabin● Rear View Camera● Front and rear work lights● Reflectors & Rear View Mirrors● Took Kit● Cabin Fan● Gauges :<ul style="list-style-type: none">a) Water temperatureb) Engine oil pressurec) Fuel Gauged) RPM meter cum hour recordere) Air Pressure Gaugef) Speedometer
OPTIONAL EQUIPMENT	<ul style="list-style-type: none">● Fly jib● Spark arrestor● Safe load indicator/ LMI● Over Hoist hydraulic cutoff● Fire extinguisher● Beacon rotating light● Front outriggers● Drag Winch● Front and side Proximity Sensors● Cabin front glass protector● Helper/Slinger seat● 4 part slotted boom, 3 part hydraulically Operated & synchronized and 4th part power extended (15.3 mtrs or 18 mtrs. height)
OPERATING WEIGHT	
Front Axle	4900 Kgs.
Rear Axle	9700 Kgs.
Total Weight	14600 Kgs.

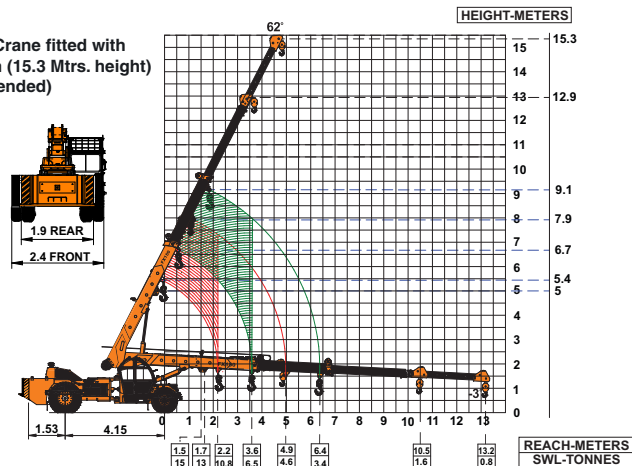
ACE FX150 Model Crane fitted with 3 part slotted boom (11 Mtrs. height)



Full rated lifting capacity available in articulated / steered condition.

NOTE: • All above specifications are pertaining to FX150 model fitted with 11 Mtrs. boom.
• Rated loads are on the basis of operation on firm and level surface.

ACE FX150 Model Crane fitted with 4 part slotted boom (15.3 Mtrs. height) (4th part power extended)



Full rated lifting capacity available in articulated / steered condition.



1 CABIN

Front mounted, ergonomically designed Cabin for better visibility and driveability.



2 OPTIMIZED KINEMATICS AND LOW C.G.

FX150 crane has been designed with low Center of Gravity (C.G.) providing best in class stability and operational safety



3 EASY MAINTENANCE

The engine is easily accessible for daily maintenance checks including battery, air filter, oil level and cooling system



4 SLOTTED BOOM

Facilitates easier load positioning and is fitted with self adjusting hook block.



6 INCREASED VISIBILITY

Bigger size front windscreen provided for better visibility and safe operation.



7 GROUND CLEARANCE

Ground clearance of 350mm for easier rough terrain operation.



8 HYDRAULIC & FUEL TANK

Easy approach and High capacity.



9 STEERING WHEEL & CONTROLS

Steering wheel is provided as standard feature, which along with ergonomically placed operator console and instrument cluster ensures ease of operation.



10 ENGINE

Best in class TATA 4 Cylinder engine having nationwide service support and spare parts availability.



11 FRONT OUTRIGGERS

Optional Front Outriggers for added safety during high lift operations.

Advantages

ACE