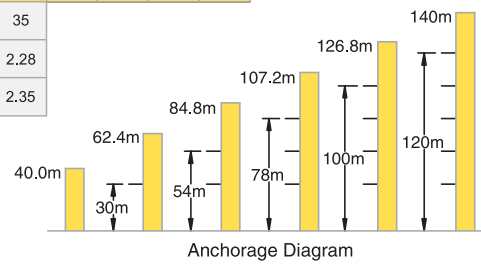


TC 5540-T Flat Top Tower Crane

5 t

Load Capacity

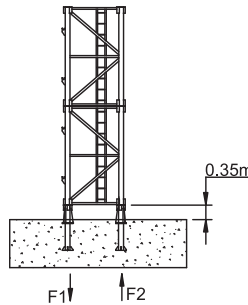
Jib Length	Radius (m)		2.8~15															
	Hoisting Load (t)		18	20	22	25	28	30	32	35	38	40	42	45	48	50	52	55
55m	5.00		4.26	3.67	3.34	2.87	2.46	2.27	2.07	1.85	1.63	1.53	1.41	1.29	1.16	1.09	1.02	0.93
	2.50							2.34	2.14	1.91	1.70	1.60	1.48	1.35	1.23	1.16	1.09	1.00
50m	5.00		4.51	3.87	3.54	2.98	2.62	2.39	2.21	1.91	1.75	1.66	1.52	1.42	1.30	1.23		
	2.50							2.28	1.98	1.82	1.73	1.59	1.49	1.37	1.30			
45m, 40m	5.00		4.62	4.12	3.63	3.17	2.70	2.55	2.31	2.11	1.82	1.78	1.60	1.53				
	2.50							2.38	2.18	1.89	1.85	1.67	1.60					
35m	5.00		4.42	3.91	3.41	3.01	2.75	2.55	2.28									
	2.50							2.35										
30m, 25m, 20m	5.00		4.70	4.26	3.63	3.21	2.93											
	2.50																	



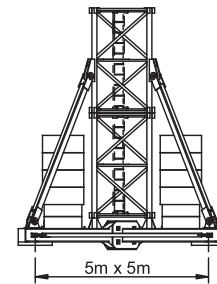
Specifications

Hoisting	No of Falls	5		6			
	Speed (m/min)	11.75	40	80	5.87	20	40
	Hoisting Load (t)	2.5	2.5	1.28	5	5	2.56
Power (kw)	5		18	18	5	18	18
	Speed (rpm)		0 ~ 0.6				
Slewing	Power (kw)		2 x 2.2				
	Trolley	Speed (m/min)	40		20		
Power (kw)		3.3		2.2			
Climbing	Speed (m/min)	0.55 - 0.7					
	Power (kw)	5.5					
Main Supply	415V / 50Hz						
Electric Power	25.7kw (32.1 kVA)						
Variant Model	6 Ton Max. Capacity Mechanism at 13.5m						

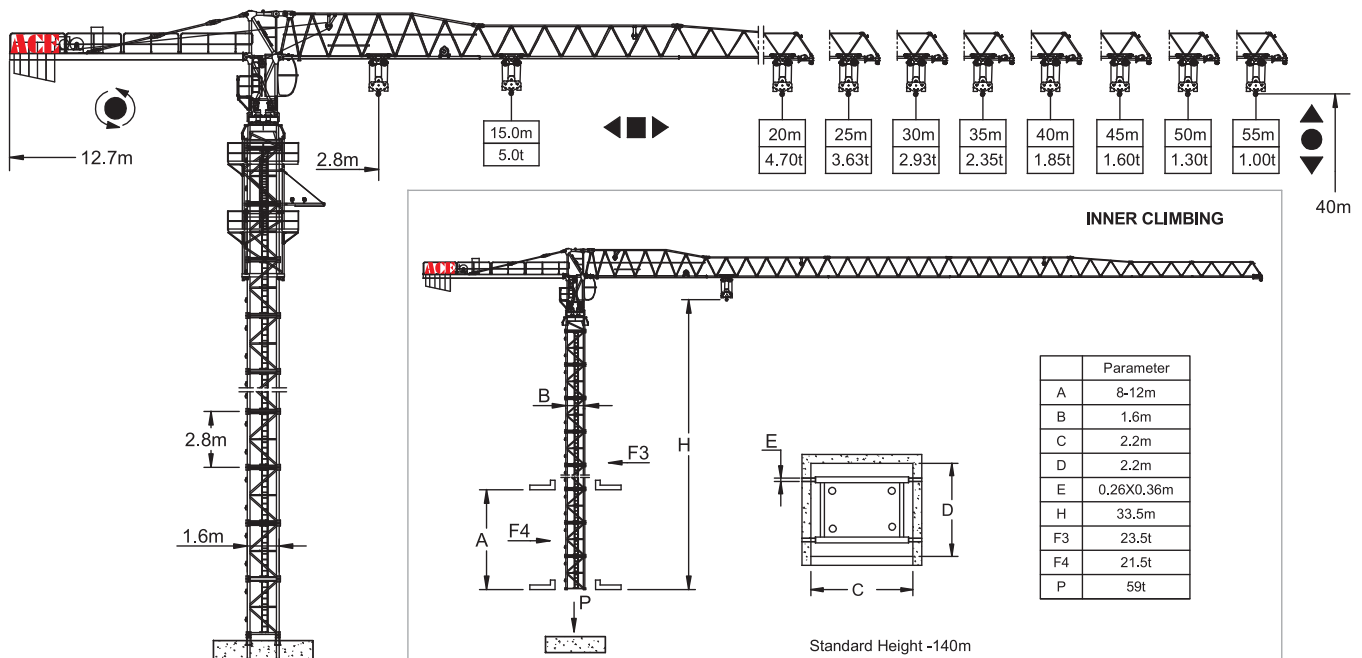
Outrigger Stationary



Chassis Stationary/Rail Mounted



F1	◇ 59t	△ 75t	⊙ 32.9t
F2	◇ 81t	△ 97t	



F Reaction ◇ In Service △ Out of Service ⊙ Dead weight without load and counter weights but with longest jib and free standing height.
P - Vertical Load