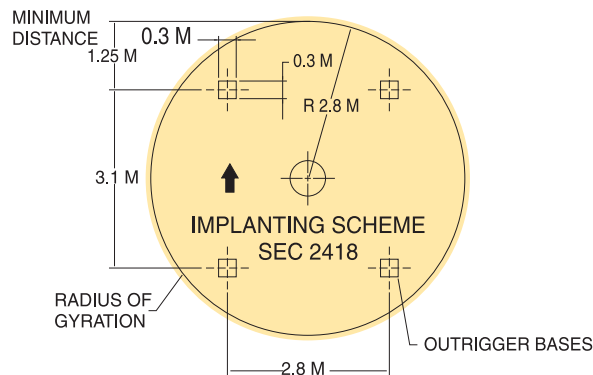
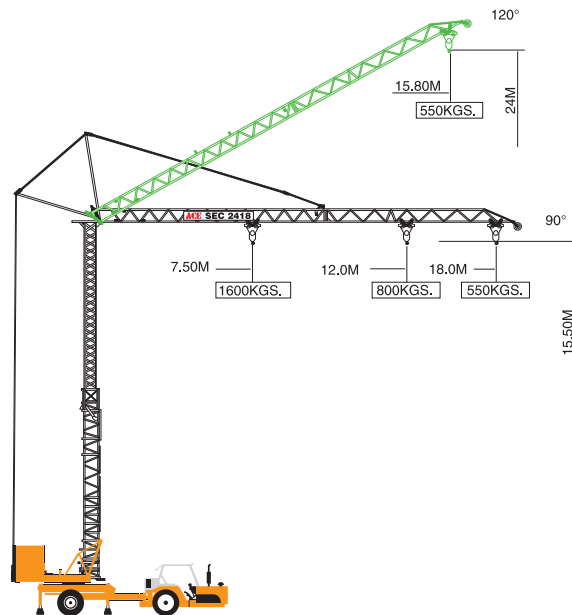


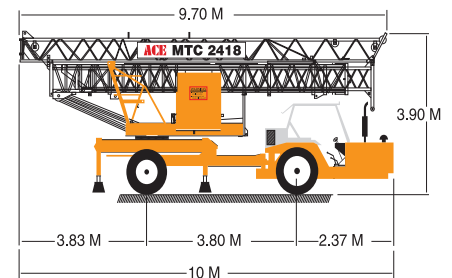
## MTC 2418 Mobile Tower Crane

1.6 t

- MTC-2418 is an **all-terrain, self propelled** mobile tower crane, with a road speed of 25 km/hr. A differential lock enables it to get out of tough spots.
- MTC-2418 is **self erecting/self-folding**. Operations can be easily affected in a few minutes by a single operator through a remote control pod.
- MTC-2418 is **remote controlled**. It facilitates the operator to position himself in such a way that he can see both picking as well as dumping points for precise load positioning.
- A **built-in generator**, driven by the prime mover's engine makes MTC-2418 totally independent of any outside electric source. The crane only uses a part of the power and the generator can be used to supply other electrical equipment like mixers, vibrators and job site lighting systems.
- An articulated chassis and hydraulic steering system enables a very **short turning radius and easy positioning**.
- Stabilizers are of out and down type and can be retracted into the lower chassis to satisfy **road clearance codes**.



ALL DIMENSIONS IN METRES ±5%



Horizontal jib position	Height	15.5 mtrs.
	Length	7.5 mtrs. 18 mtrs.
	Capacity	1600 Kgs. 550 Kgs.
Raised jib position	Height	24 mtrs.
	Length	7.2 mtrs. 15.8 mtrs.
	Capacity	1600 Kgs. 550 Kgs.
Speed	Trolleying	33m/min.
	Hoisting	15m/min. & 30m/min.
	Slewing	1 RPM
Electrical motors	Trolleying	1.5 H.P.
	Hoisting	7.5 H.P.
	Slewing	2.0 H.P.
Electric Power		10.25 KVA
Engine (Prime mover)		Four cylinder, water cooled, diesel engine developing 49 BHP at 2300 RPM. Model A498
Generator Power Developed		20 KVA
Total weight with Ballast		13500 Kgs.
Total weight without Ballast		8700 Kgs.
Transportation Dimensions	Width	2.5 mtrs.
	Length	10 mtrs.
	Height	3.9 mtrs.
Front axle load		5300 Kgs.
Rear axle load		8200 Kgs.
Safety device		<ul style="list-style-type: none"> <li>• Circuit breakers</li> <li>• Overload limit switch</li> <li>• Moment limit switch</li> <li>• Hoist limit switch</li> <li>• Trolley limit switch</li> </ul>
Variant Model		<b>MTC 2418 T</b> Mounted on a towable trailer without prime mover.

### MTC 2418



### MTC 2418 T - Mounted on a towable trailer

