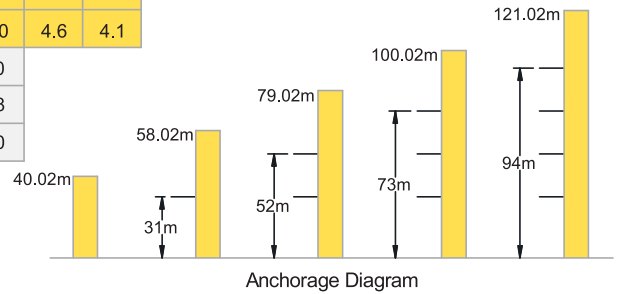


# LC 228B Luffing Crane

12 t

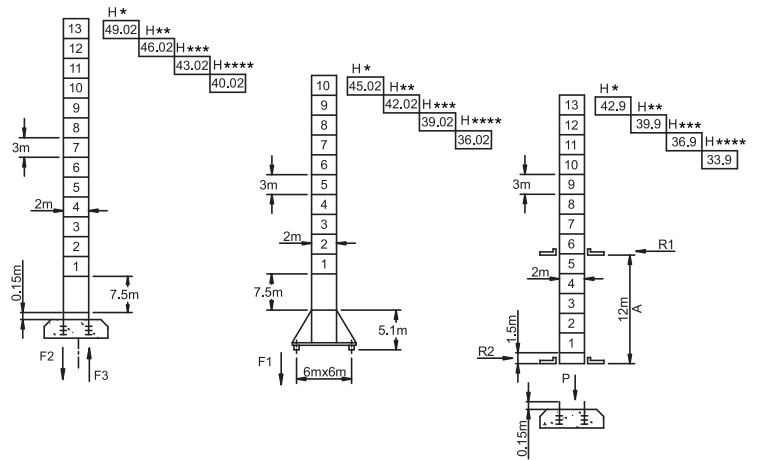
## Load Capacity

Jib Length	Radius (m)	Hoisting Load (t)														
		3.8~17.6	20	22	25	30	31.8	35	37	40	42	45	47	50	52	55
55m	3.8~17.6	12.0	10.4	9.4	8.0	6.3	5.8	4.9	4.4	3.9	3.5	3.1	2.9	2.6	2.4	2.3
	20-55	6.0						5.1	4.6	4.1	3.7	3.3	3.1	2.8	2.6	2.5
50m	3.5~19.6	12.0	10.0	8.8	8.0	6.8	6.3	6.0	5.8	5.2	4.6	4.2	3.7	3.4	3.05	
	20-50	6.0						5.4	4.8	4.4	3.9	3.6	3.25			
45m	3.5~20.0	12.0	10.4	9.0	8.1	7.0	6.4	6.0	5.8	5.3	4.8	4.4	3.9			
	20-45	6.0						5.5	5.0	4.6	4.1					
40m	3.5~20.2	12.0	10.5	9.2	8.2	7.1	6.5	6.0	5.8	5.3	4.8					
	20-40	6.0						5.5	5.0							
35m	3.5~20.4	12.0	10.8	9.3	8.3	7.3	6.6	6.1								
	20-35	6.0														



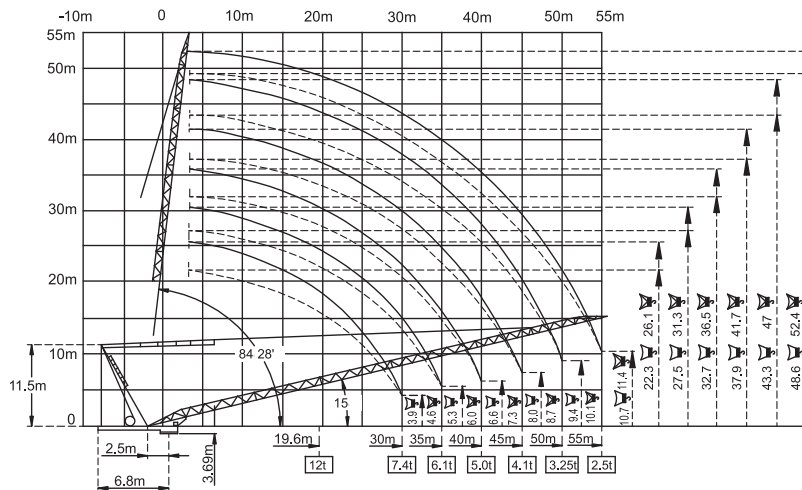
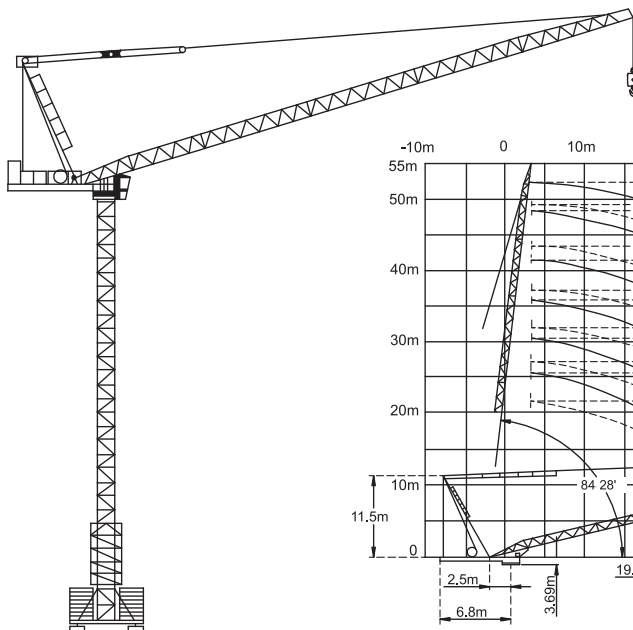
## Specifications

Hoisting	No of Falls	Hoisting Load (t)					
		6.0	4.0	3.0	12.0	8.0	6.0
Speed (m/min)	0 ~ 40	0 ~ 65	0 ~ 80	0 ~ 20	0 ~ 30	0 ~ 40	
Speed (rpm)	0 ~ 0.7						
Power (kw)	55	55	55	55	55	55	
Power (kw)	2 x 9						
Speed (m/min)	0 ~ 25						
Power (kw)	4x3.4						
Speed (m/min)	≤ 3.0						
Power (kw)	45						
Main Supply	415V / 50Hz						
Electric Power	118kw (147.5 kVA)						



F2	◇ 174t	△ 294t	⊕ 87.5t
F3	◇ 111t	△ 237t	⊕ 87.5t
F1	◇ 118t	△ 134t	⊕ 97t

A	12m	16m
R1	34t	25.5t
R2	29.6t	22.2t
P	101t	101t
	⊕ 81.5t	



F Reaction ◇ In Service △ Out of Service ⊕ Dead weight without load and counter weights but with longest jib and free standing height.  
 P Vertical Load H Free Standing Height Jib \* 30 - 35m \*\* 40 - 45m \*\*\* 50m \*\*\*\* 55m